



系列数控板料折边机 Series Panel Bender

FBA

FBE

FBE-FMC

 **Yawei 亚威**

股票代码 002559

Stock Code 002559

产品目录 Catalogue

追求卓越 不断创新 Pursue excellence Keep innovating	02
FBA 系列 FBA Series	04
FBE 系列 FBE Series	10
FBE-FMC 系列 FBE-FMC Series	16
典型工艺展示 Typical folding craft display	18
行业应用 Industry Application	19

亚威拥有四十多年的钣金机床制造经验，一直致力于高效、高精度、节能钣金加工设备的研发和制造，积累了丰富的成功经验，服务于各类金属板材加工行业。

丰富的产品系列，覆盖全面的行业需求，为您提供最合适的钣金折边工艺解决方案。

Yawei has more than 40 years of experience in sheet metal machine tool manufacturing, and has been committed to the research and development and manufacturing of high-efficiency, high-precision, and energy-saving sheet metal processing equipment. It has accumulated a lot of successful experience and served various sheet metal processing industries.

A rich product series, covering a comprehensive range of industry needs, to provide you with the most suitable sheet metal folding process solutions.

优势 Advatage

- 全自动折边，高速高效，颠覆传统
- 高刚性结构，承载力强，保证寿命
- 高精度设计，一致性高，决定品质
- 多工艺集成，丰富成熟，覆盖全面
- 简化操作，快捷编程，自动补偿
- Fully automatic folding, high speed and high efficiency, subvert the tradition
- High rigidity structure, strong bearing capacity, guaranteed life
- High-precision design, high consistency, determine quality
- Multi-process integration, rich and mature, comprehensive coverage
- Simple operation, fast programming, automatic compensation



FBA 系列 通用型数控板料折边机

FBA Series Universal panel bender

- 经济适用，稳定可靠，性价比高
- 手动换模，自由组合，适合批量加工
- 全电伺服控制，节能环保
- Economical, stable and reliable, cost-effective
- Manual mold change, free combination, suitable for batch processing
- Full electric servo control, energy saving and environmental protection



FBE 系列 高性能数控板料折边机

FBE Series High-performance panel bender

- 全自动换模功能，快速适应工件尺寸变化
- 多连杆传动技术，满足更高加工需求
- 内嵌自动补偿系统，给客户id提供高品质的应用体验
- Fully automatic mold change function, quickly adapt to the change of workpiece size
- Multi-link transmission technology to meet higher processing needs
- Built-in automatic compensation system to provide customers with high-quality application experience



FBE-FMC 系列 高柔性数控板料折边单元

FBE-FMC Series Highly flexible panel bender unit

- 柔性化自动上下料单元，大幅提升生产效率
- 完善的过程监控系统确保机床长期稳定运行
- 通过传动单元提供稳定可靠的加工质量
- Flexible automatic loading and unloading unit, greatly improving production efficiency
- Complete process monitoring system to ensure long-term stable operation of the machine tool
- Provide stable and reliable processing quality through the transmission unit



FBA 系列

通用型数控板料折边机

FBA Series Universal Panel Bender

- 全触控人机操作界面，功能强大的数控系统
- 较优的核心配置和参数匹配，提供稳定的操作体验
- 简约风格的外观设计，美观大方
- 节能环保、低能耗、低噪音

- Full touch man-machine interface, powerful CNC system
- Optimal core configuration and parameter matching provide a stable operating experience
- Simple style appearance design, beautiful and generous
- Energy saving, environmental protection, low energy consumption, low noise

配置丰富 搭配灵活

Rich configuration Flexible collocation



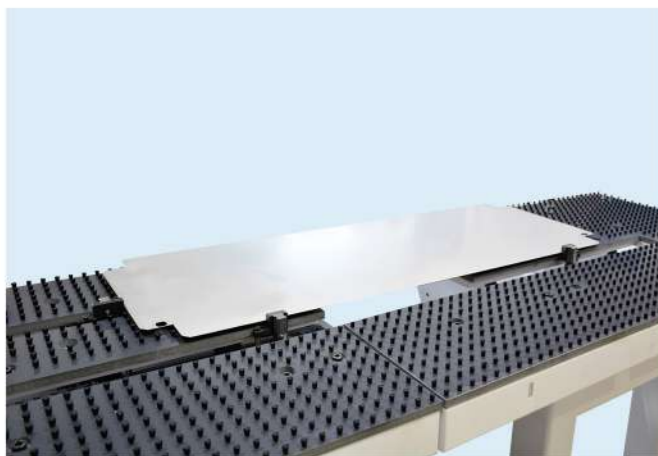
折边梁 Folding beam

- 主体采用高强度材料整体铸造，通过 cosmos 有限元动态分析优化结构，降低传动负载重量，提升传动刚性，更利于高动态、高响应的传动系统
- The main body is integrally cast with high-strength material, and the structure is optimized through cosmos finite element dynamic analysis, which reduces the transmission load weight and improves the transmission rigidity, which is more conducive to a high-dynamic and high-response transmission system



压紧模具 Compression mold

- 模具基体整体淬火后通过高精度磨床加工，确保精度一致性和使用稳定性
- After quenching, the mold base is processed by a high-precision grinder to ensure accuracy consistency and stability in use



定位装置 Positioning device

- 半自动定位装置操作简单，快速实现板材定位，提升加工效率
- Semi-automatic positioning device can quickly align the position of the plate and improve the processing efficiency



折边梁传动机构 Folding beam transmission mechanism

- 采用伺服电机搭载低背隙行星减速机配合重载高精研磨丝杆驱动折边模具按照规划路径运行
- 结构紧凑，合理的负载动力匹配，传动稳定性高
- Servo motor equipped with low-backlash planetary reducer and heavy-duty high-precision grinding screw drive folding mold to run according to the planned path
- Compact structure, reasonable load power matching, high transmission stability



旋转驱动装置 Rotation drive device

- 吸盘装置具有网孔板吸取功能，适应多种应用场合
- 快卸式吸盘装置可以根据客户工件尺寸快速调换
- The suction cup device has a mesh plate suction function, which is suitable for a variety of applications
- The quick-release suction cup device can be quickly exchanged according to the size of the customer's workpiece



合页模 Hinged mold

- 可适应复杂形状工件的加工，弥补固定压紧模具的缺点
- It can be adapted to the processing of complex-shaped workpieces and make up for the shortcomings of fixed compression molds

配置丰富 搭配灵活
Rich configuration Flexible collocation

参数领先 性能卓越
Leading parameters Excellent performance



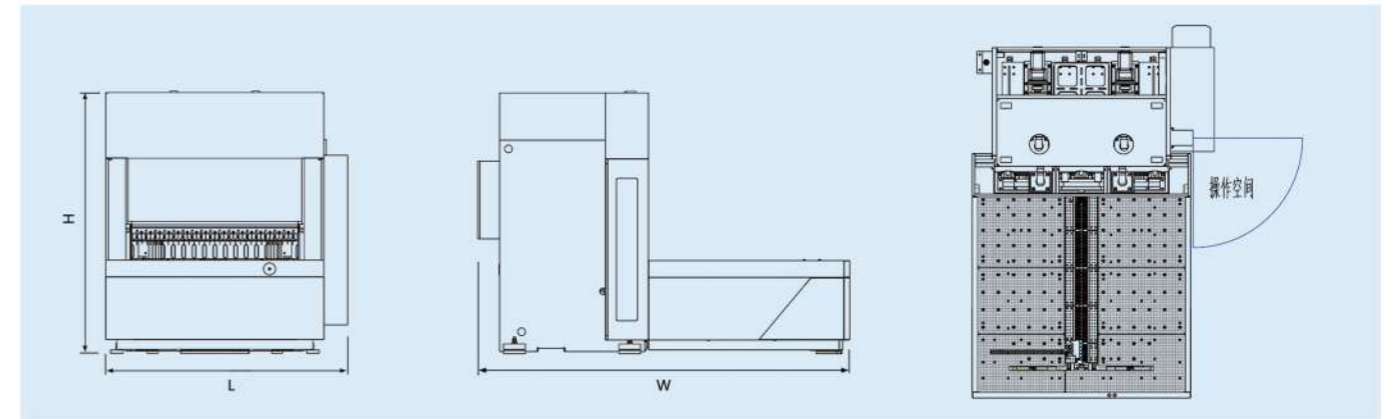
德国 BECKHOFF 数控系统

- 15 “彩色显示触摸屏 (可选配 17”)
- 超过 20000 个程序的存储空间
- 通过 USB 进行数据存储
- 界面编程及 2D 成型模拟
- 离线编程功能 (选配)
- 自动计算压紧力、折边压力及安全区域
- 方便快捷的尺寸及角度校正
- 自动化组线接口 (选配)
- 系统诊断功能

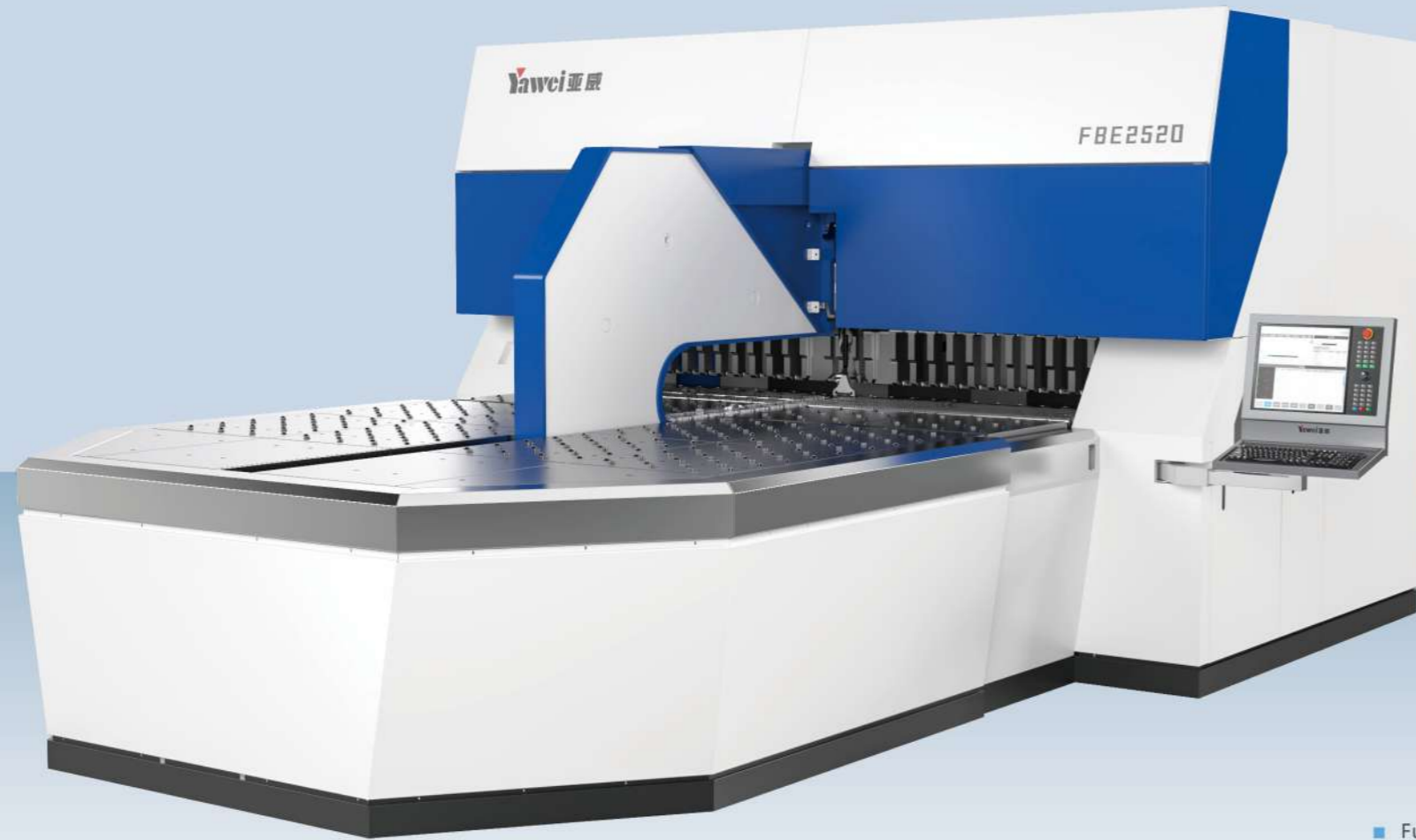
Germany BECKHOFF CNC system

- 15 "color display touch screen (optional 17")
- Storage space for more than 20,000 programs
- Data storage via USB
- Interface programming and 2D bending simulation
- Offline programming function (optional)
- Automatic calculation of pressing force, folding pressure and safe area
- Convenient and quick size and angle correction
- Automated wiring interface (optional)
- System diagnosis function

技术参数 TECHNICAL SPECIFICATIONS



型号 Model	最大板材 对角线长度 Maximum diagonal length of sheet mm	最大折弯 长度 Max folding length mm	最大折 弯高度 Max folding height mm	最大板材厚度 Max sheet thickness			最小板材 厚度 Min. sheet thickness mm	伺服 轴数 Servo axis	设备总 功率 Total power /KW	外形尺寸 Dimensions LxWxH mm	机床 重量 Machine weight kg
				普通碳钢 Mild steel 410N/mm ²	不锈钢 SS 660N/mm ²	铝合金 Al Alloy 265N/mm ²					
FBA1516(吸盘式) FBA1516(Suction cup)	1850	1500	165	1.2	0.8	1.6	0.5	9	25	3.4*2.2*2.45	9500
FBA1516	1850	1500	165	1.2	0.8	1.6	0.5	12	28	4.4*2.2*2.45	10000
FBA2016	2400	2000	165	2	1.2	3	0.5	12	36	4.5*2.8*2.8	14000
FBA2020	2400	2000	200	2	1.2	3	0.5	12	36	4.5*2.8*3	17000
FBA2030	2400	2000	300	2	1.2	3	0.5	12	36	4.6*2.8*3.2	18500



FBE 系列

高性能数控板料折边机

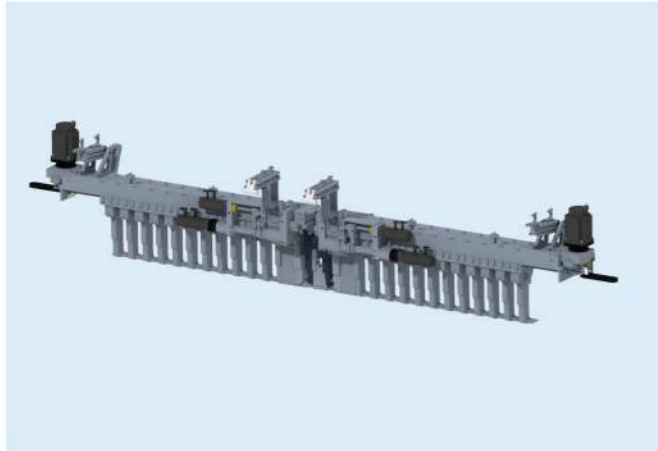
FBE Series High-performance panel bender

- 全触控人机操作界面，功能强大的数控系统
- 自动换模技术，加工效率提升，操作体验更佳
- 高柔性定位装置，适应各类非对称工件的定位
- 内嵌式精度补偿方案，确保高品质的工件加工
- 全新的工业外观设计，美观大方

- Full touch man-machine interface, powerful CNC system
- Automatic mold change technology improves processing efficiency and better operating experience
- Highly flexible positioning device, suitable for the positioning of various asymmetric workpieces
- Built-in precision compensation scheme to ensure high-quality workpiece processing
- Brand new industrial appearance design, beautiful and generous

配置丰富 搭配灵活

Rich configuration Flexible collocation



自动换模 Automatic mold change

- 全伺服全自动模具长度调整，快捷智能
- 多种模具组合动作，具有翻边避让功能，实现板材柔性加工
- Full-servo automatic mold length adjustment, fast and intelligent
- Multiple mold combined actions, with flanging avoidance function, realizing flexible processing of plates



操作机结构 Manipulator structure

- 具有全伺服闭环控制系统，实现高精度任意角度旋转定位
- 送料和旋转联动控制，实现快速旋转送料定位
- With a full servo closed-loop control system to achieve high-precision rotation positioning at any angle
- Feeding and rotating linkage control, realize fast rotating feeding positioning



插片模具调整装置 Insert mold adjusting device

- 左右两套插片模具配置可实现非对称距离调节，适应复杂形状工件的加工
- 插片模具实现最小 5mm 的长度变化，保证任意长度调整
- The configuration of left and right insert molds can realize asymmetric distance adjustment and adapt to the processing of complex shape workpiece.
- The insert mold realizes a minimum length change of 5mm, ensuring any length adjustment



定位装置 Positioning device

- 组合式定位装置，满足外角定位，内角定位以及错边定位等多种定位需要
- Combined positioning device to meet various positioning requirements such as external angle positioning, internal angle positioning and edge positioning



中置避让模具 Center avoidance mold

- 模具可快速避让，下压后自动展开压紧工件，实现柔性加工
- The mold can quickly evade, and after pressing down, it will automatically unfold and compress the workpiece to realize flexible processing.



短刀装置 Short mold device

- 短刀装置能够实现局部折弯，拓宽加工工艺
- The short mold device can realize partial bending and broaden the processing technology

配置丰富 搭配灵活
Rich configuration Flexible collocation

参数领先 性能卓越
Leading parameters Excellent performance



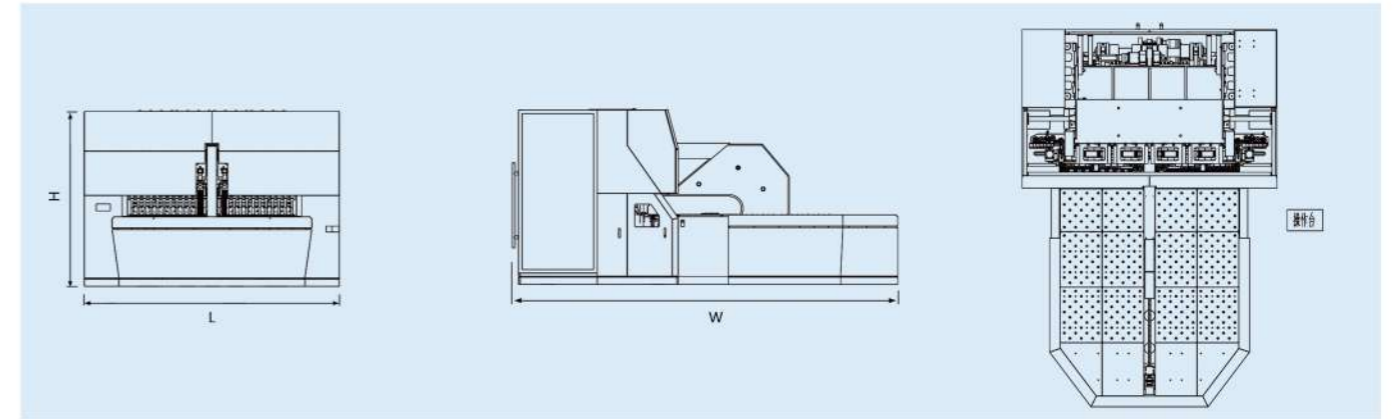
德国 SIEMENS 数控系统

- 17 “彩色显示触摸屏
- 超过 20000 个程序的存储空间
- 通过 USB 进行数据存储
- 界面编程及 2D 成型模拟
- 2D/3D 离线编程功能 (选配)
- 自动计算压紧力、折边压力及安全区域
- 系统诊断功能
- 方便快捷的尺寸及角度校正
- 自动化组线接口 (选配)
- 角度校正自动补偿功能 (选配)

Germany SIMENS CNC system

- 17" color display touch screen
- Storage space for more than 20,000 programs
- Data storage via USB
- Interface programming and 2D molding simulation
- 2D/3D offline programming function (optional)
- Automatic calculation of pressing force, hemming pressure and safe area
- System diagnosis function
- Convenient and quick size and angle correction
- Automated wiring interface (optional)
- Angle correction automatic compensation function (optional)

技术参数 TECHNICAL SPECIFICATIONS



型号 Model	最大板材 对角线长度 Maximum diagonal length of sheet	最大折弯 长度 Max folding length	最大折 弯高度 Max folding height	最大板材厚度 Max sheet thickness			最小板材 厚度 Min. sheet thickness	伺服 轴数 Servo axis	设备总 功率 Total power	外形尺寸 Dimensions LxWxH	机床 重量 Machine weight
	mm	mm	mm	普通碳钢 Mild steel 410N/mm ²	不锈钢 SS 660N/mm ²	铝合金 Al Alloy 265N/mm ²	mm	/KW	mm	kg	
FBE2520	2800	2500	204	3	2	4	0.5	23	60	6*4*2.65	25500
FBE3220	3530	3220	204	3	2	4	0.5	23	82	7*5*2.65	31500



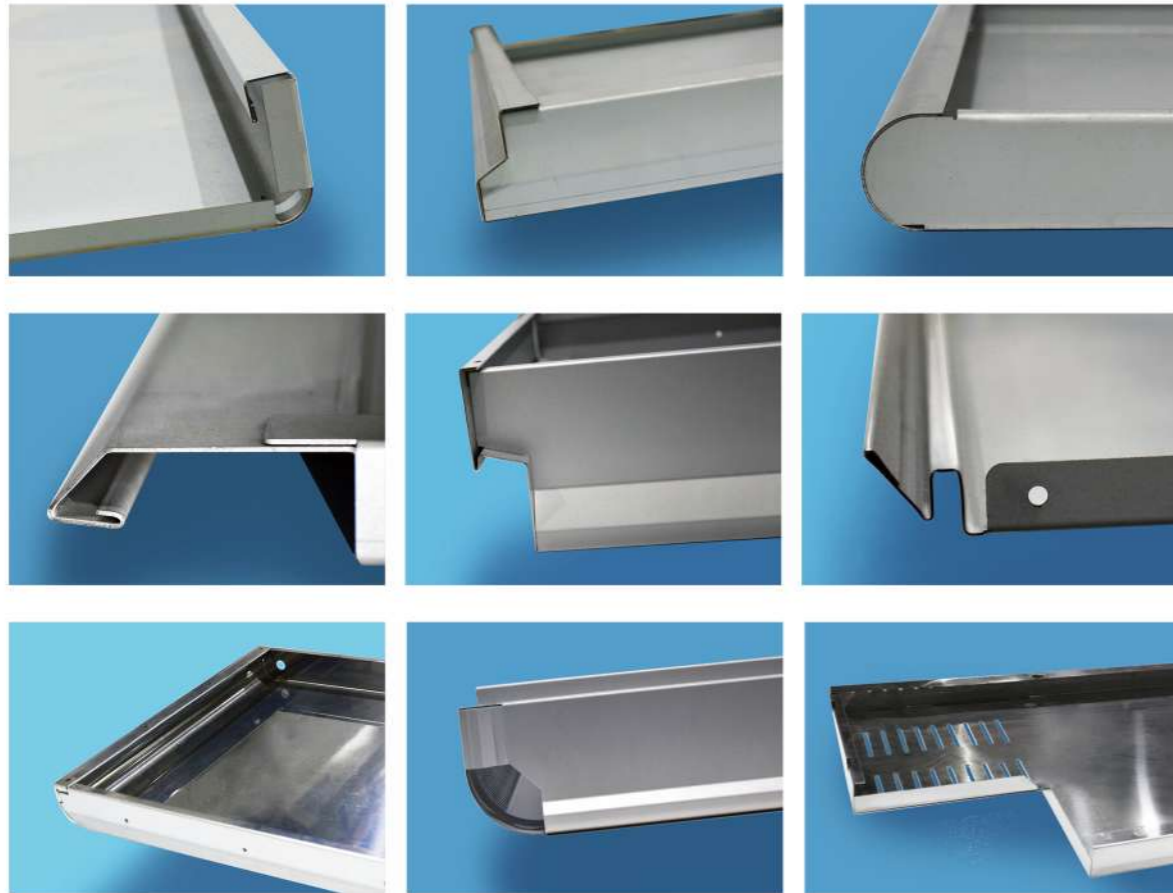
FBE - FMC 系列 高柔性数控板料折边机

FBE-FMC Series Highly flexible panel bender unit

- 全新的外观工业设计，提供了友好的人机交流环境
- 全自动上下料输送装置，智能适应板材，高效精准稳定
- 分区上料及翻面选配方案，满足小批量多品种连续加工
- 计划列表及 MES 集成，功能更强大，柔性更高

- The brand-new industrial appearance design provides a friendly environment for human-machine communication
- Fully automatic loading and unloading conveying device, intelligently adapt to the plate, high efficiency, precision and stability
- Partition feeding and turning options to meet the continuous processing of small batches and multiple varieties
- Job list and MES integration, more powerful and flexible

复杂截面工艺实现技术
Complex section process model library technology



办公家具行业
Office furniture industry



工具柜行业
Tool cabinet industry



餐厨行业
Kitchenware industry



钢制门行业
Steel door industry



家电行业
Appliance industry



电梯行业
Elevator industry



电气柜行业
Electrical cabinet industry



幕墙行业
Curtain Wall Industry



机箱机柜行业
Chassis cabinet industry

江苏亚威机床股份有限公司
JIANGSU YAWEI MACHINE TOOL CO., LTD.

中国

江苏扬州市江都区黄海南路仙城工业园

邮 编 : 225200

销售电话 : 0514-86880518 86880528 86519118

售后服务 : 0514-86880538 86519128 86519158

配件销售 : 0514-86519148

传 真 : 0514-86882218 86519188

网 址 : www.yawei.cc

电 邮 : sales1@yawei.cc

INTERNATIONAL

XIANCHENG INDUSTRIAL ZONE, HUANGHAI SOUTH ROAD

JIANGDU DIST. 225200 YANGZHOU, JIANGSU, CHINA

Sales hot line : +86-514-86880517 +86-514-86880518

Service phone : +86-514-86880517 +86-514-86880538

Part sales phone: +86-514-86519148

FAX : +86-514-86880521 +86-514-86882218

HTTP : www.yawei.cc

Email : sales1@yawei.cc

Yawei 亚威

以上标志为江苏亚威机床股份有限公司商标

This mark is the commercial brand of Jiangsu Yawei Machine Tool Co., Ltd.

产品不断改进, 样本如有变动恕不另行通知

The contents are subject to change without prior notice

服务热线: 400-00-2559

Service hot line: 400-000-2559



亚威公众微信
YAWEI WeChat



亚威官方网站
YAWEI Website